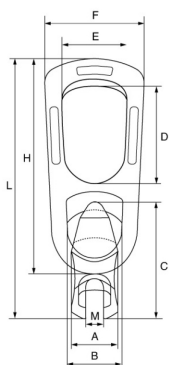


Grade 80 Cobra Lifting Clutch – G80LC



- Ring: Casted Alloy.
- Base: Forged Alloy Steel.
- Red painted finish.
- Marked with CE, W.L.L, material grade, manufacturers ID and traceability code.
- Certification available **2.1** **DoC**

Product Code	Part No.	W.L.L. t	M.B.L. t	A mm	B mm	C mm	D mm	E mm	F mm	H mm	M mm	L mm	Weight kgs
G80LC1.3	SLR-101-1-1.3	1-1.3	5.2	34	42	80.4	70.5	45	73	157	11.5	181	0.89
G80LC2.5	SLR-101-1-1.5-2.5	1.5-2.5	10	42	49	99	85	57	88	190	16	220	1.3
G80LC5	SLR-101-1-3-5	3-5	20	55	70	133	88	69	110	233	22	271	3.24
G80LC10	SLR-101-1-6-10	6-10	40	74	92	176	116	83	161	336.5	30	386	10.01