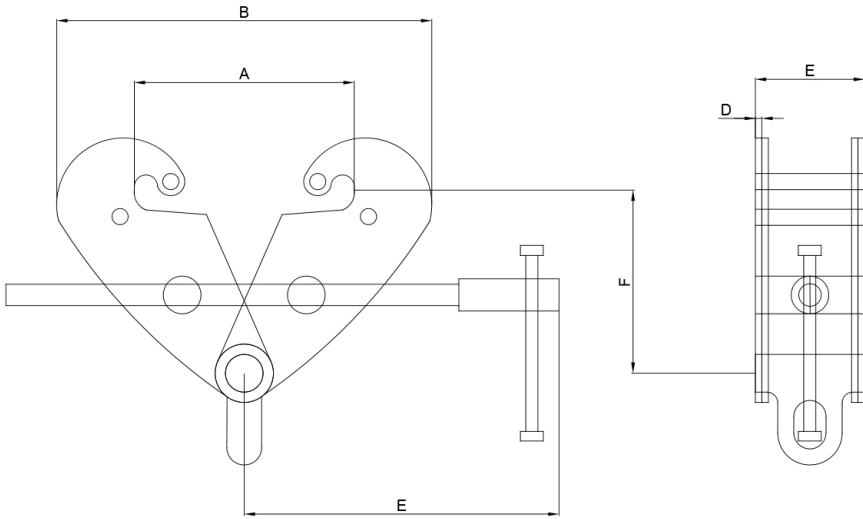


# Beam Clamp

## Manufactured and Tested according to EN13155

Available in Black 1T to 10T.

- Complete with small shackle as standard.
- Quick and easy installation.
- Creates lifting point for use with manual hoists etc.



Capacity (tonnes)	1	2	3	5	10
Proof Load (tonnes)	1.5	3	4.5	7.5	15
I-Beam Width (mm)	75-220	75-220	80-320	80-320	80-350
A (max)	265	260	370	380	390
B (min)	184	185	220	222	234
B (max)	367	360	510	522	536
C	80	74	120	127	134
D	5	6	8	10	12
E	230	215	274	276	274
F (max)	173	155	227	222	245
F (min)	102	102	132	98	150
G	24	25	46	45	69
H	21	22	24	23.2	32.6
Weight (kg)	4	4.6	9.1	11	14.6
Weight with shackle (kg)	4.7	5.1	10.2	11.94	15.14