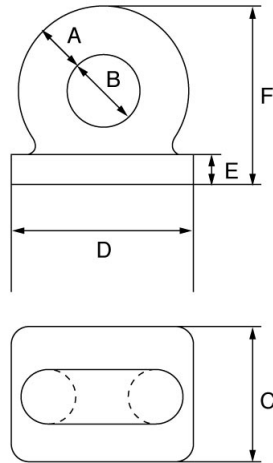


## Rectangular Base Deckplate – DP



### Rectangular Base Deckplate – DP

- High tensile steel.
- Self colour finish.
- Based upon the Admiralty Pattern.
- W.L.L. is subject to correct welding procedures being carried out.
- Marked with CE, size, traceability code and proof load.
- Certification available [2.1](#) [2.2](#)

Product Code	Part No.	A	B	C	D	E	F	P.L.	Weight
			mm	mm	mm	mm	mm	t	kgs
DP10	4014	3/8" (10mm)	20	25	45	6	38	2	0.14
DP12	4015	1/2" (12.5mm)	25	35	60	8	50	3.5	0.31
DP16	4016	5/8" (16mm)	32	45	70	10	64	5.5	0.45
DP19	4017	3/4" (19mm)	38	50	85	12	76	7.5	0.79
DP22	4018	7/8" (22mm)	44	61	102	12	88	9.6	1.36
DP25	4019	1" (25mm)	50	70	115	16	100	13	1.82
DP28	4020	1.1/8" (28mm)	56	76	130	18	114	15.75	2.95
DP32	4021	1.1/4" (32mm)	64	85	145	19	128	20	3.86
DP38	4023	1.1/2" (38mm)	76	100	170	22	152	29	6.58
DP44	4025	1.3/4" (44mm)	89	121	200	27	178	39	18
DP50	4027	2" (50mm)	102	137	229	30	203	50	25