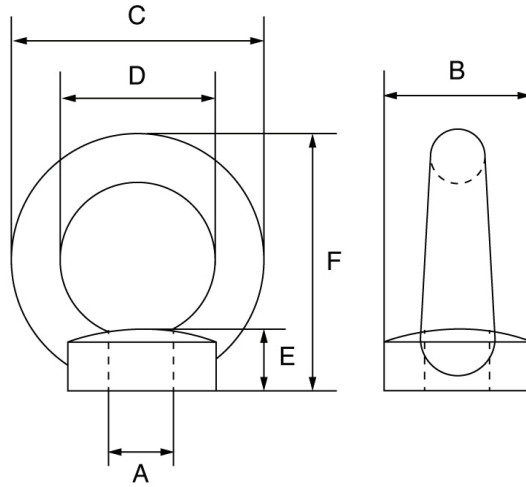


## Eye nut to DIN 582\* – ENDIN



- Mild steel.
- Self coloured and electro galvanised finish.
- Meets the W.L.L. requirements of DIN 582.\*
- Minimum breaking load is 4 times the W.L.L.
- Marked with CE, W.L.L., material, size and product ID mark.
- For further clarification on reductions for non-axial loading, please consult Manufacturer
- Certification available **2.1** **DoC**

Product Code	W.L.L. t	A mm	B mm	C mm	D mm	E mm	F mm	Weight kgs
ENDIN6	0.07	M6	20	36	20	8.5	36	0.05
ENDIN8	0.14	M8	20	36	20	8.5	36	0.05
ENDIN10	0.23	M10	25	45	25	10	45	0.1
ENDIN12	0.34	M12	30	54	30	11	53	0.16
ENDIN14	0.49	M14	35	63	35	13	60	0.22
ENDIN16	0.7	M16	35	63	35	13	62	0.24
ENDIN20	1.2	M20	40	72	40	16	71	0.35
ENDIN22	1.5	M22	45	81	45	18	80	0.59
ENDIN24	1.8	M24	50	90	50	20	90	0.71
ENDIN27	2.5	M27	50	90	50	20	90	1.02
ENDIN30	3.2	M30	65	108	60	25	109	1.3
ENDIN33	4.3	M33	65	108	60	25	110	1.7
ENDIN36	4.6	M36	75	126	70	30	128	2.08
ENDIN39	6.1	M39	75	126	70	30	130	2.6
ENDIN42	6.3	M42	85	144	80	35	147	3.11
ENDIN45	8	M45	85	144	80	35	150	4.07
ENDIN48	8.6	M48	100	166	90	40	168	5.02
ENDIN56	11.5	M56	110	184	100	45	187	6.69
ENDIN64	16	M64	120	206	110	50	208	9.3