

Shackles

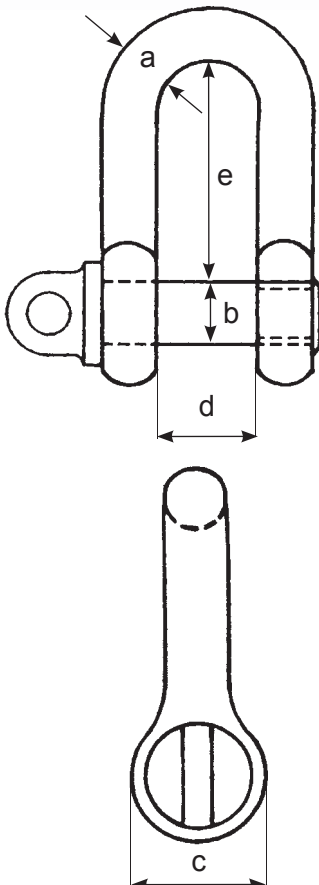
Steel D Shackles



- Steel D shackles available with a screw type A pin
- Stamped with safe working load and batch number
- Galvanised shackles available to order
- Supplied with thorough examination report

Large D

Working Load Limit Tons	Diameter Bow a inch	Diameter Pin b inch	Diameter Eye c inch	Width Inside d inch	Length Inside e inch	Weight each kg
0.25	1/4	3/8	3/4	1/2	1	0.06
0.50	3/8	1/2	1	3/4	1.1/2	0.16
0.75	1/2	5/8	1.1/4	1.1/8	2.1/8	0.35
1.50	5/8	3/4	1.1/2	1.1/4	2.1/2	0.63
2.00	3/4	7/8	1.3/4	1.1/2	2.7/8	1.00
3.00	7/8	1	2	1.3/4	3.1/4	1.54
3.75	1	1.1/8	2.1/4	2	3.3/4	2.21
5.00	1.1/8	1.1/4	2.1/2	2.1/8	4.1/8	3.11
6.00	1.1/4	1.3/8	2.3/4	2.3/8	4.1/2	4.33
7.00	1.3/8	1.1/2	3	2.5/8	5	5.33
9.50	1.1/2	1.3/4	3.1/2	2.3/4	5.3/8	8.46
11.25	1.5/8	1.7/8	3.3/4	3	5.3/4	10.48
13.00	1.3/4	2	4	3.1/4	6.1/8	12.66
14.25	1.7/8	2.1/8	4.1/4	3.5/8	7	15.34
16.25	2	2.1/4	4.1/2	3.7/8	7.3/8	18.50
18.00	2.1/8	2.3/8	4.3/4	4.1/8	7.3/4	23.80
20.00	2.1/4	2.1/2	5	4.1/4	8.1/4	28.60



Small D

Working Load Limit Tons	Diameter Bow a inch	Diameter Pin b inch	Diameter Eye c inch	Width Inside d inch	Length Inside e inch	Weight each kg
0.30	1/4	3/8	3/4	3/8	7/8	0.06
0.60	3/8	1/2	1	5/8	1.3/8	0.15
1.00	1/2	5/8	1.1/4	7/8	1.7/8	0.33
1.75	5/8	3/4	1.1/2	1	2.1/4	0.61
2.50	3/4	7/8	1.3/4	1.1/4	2.3/4	0.93
3.50	7/8	1	2	1.3/8	3.1/4	1.50
4.50	1	1.1/8	2.1/4	1.1/2	3.5/8	2.15
5.50	1.1/8	1.1/4	2.1/2	1.3/4	4.1/8	3.02
7.00	1.1/4	1.3/8	2.3/4	1.7/8	4.1/2	4.20
8.00	1.3/8	1.1/2	3	2.1/8	5	5.34
10.75	1.1/2	1.3/4	3.1/2	2.3/8	5.1/2	8.36
13.00	1.5/8	1.7/8	3.3/4	2.1/2	5.7/8	9.35
14.75	1.3/4	2	4	2.3/4	6.3/8	12.39
16.75	1.7/8	2.1/8	4.1/4	2.7/8	6.3/4	15.30
19.00	2	2.1/4	4.1/2	3	7.1/4	18.40